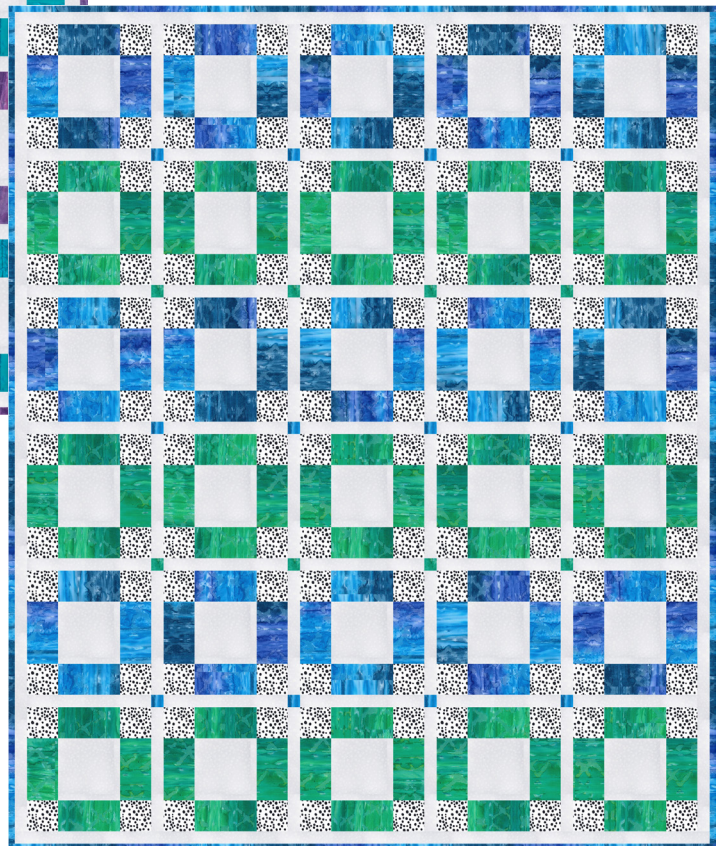
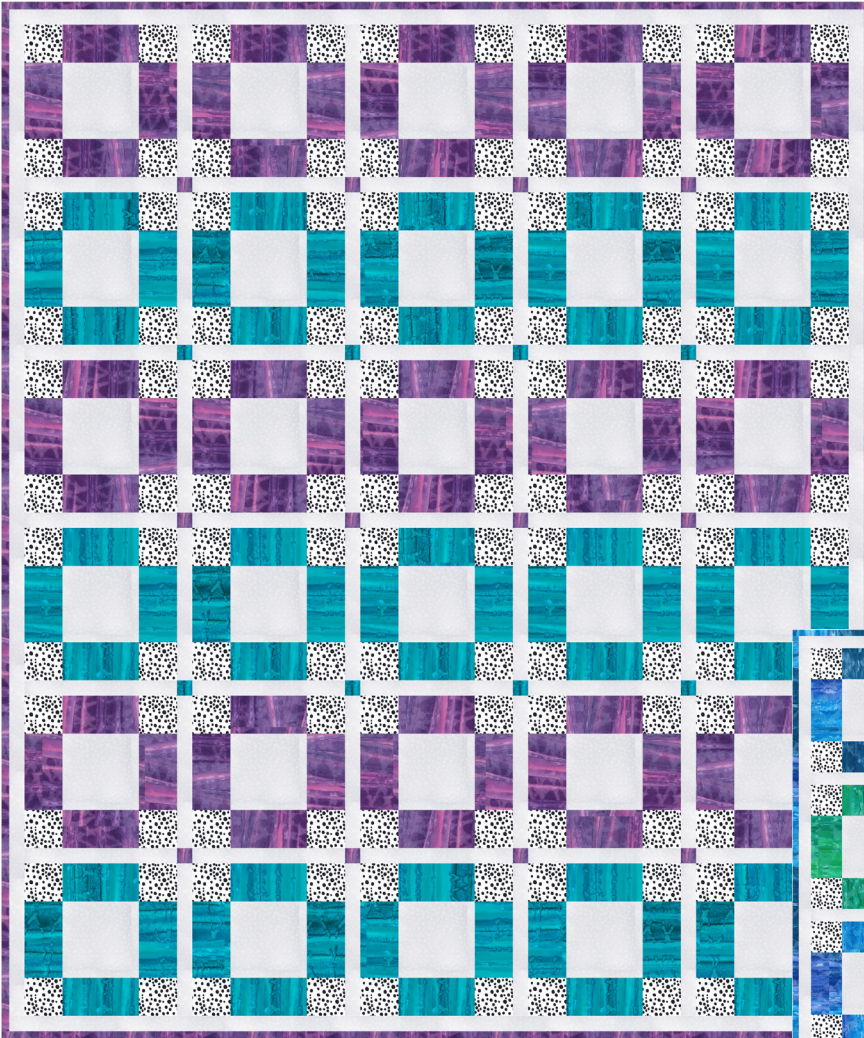


# Jewel Box

FREE DOWNLOAD PATTERN

56 1/2" x 67 1/2"



Designed by Banyan Batiks Studio  
[www.BanyanBatiks.com](http://www.BanyanBatiks.com)

# Jewel Box

## Lap Quilt in 2 Colorways – Amethyst/Turquoise and Sapphire/Emerald

Collections: **Brush Strokes** and **Banyan Classics**

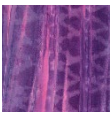
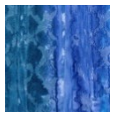

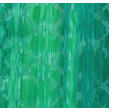



Finished Size 56 ½" x 67 ½"

WOF = width of fabric

LOF = length of fabric

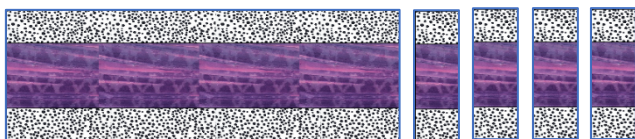
All seams sewn using ¼" seam allowance

Diagrams are shown in the Amethyst/Turquoise colorway; the Emerald/Sapphire colorway is made in the same manner.

<b>Amethyst/ Turquoise</b>	<b>Sapphire/ Emerald</b>	<b>Yardage</b>	<b>Cutting Instructions</b>
Fabric A: 81230-84 or 81230-43  		2 1/4 yds	Cut 6 – 3" x WOF strips Cut 1 – 1 ½" x WOF strip; sub-cut 12 – 1 ½" x 1 ½" squares Cut 7 – 2 ¼" x WOF strips; Set aside for binding From remaining fabric, Cut 3 – 5 ½" x LOF strips
Fabric B: 81230-63 or 81230-69  		1 3/4 yds	Cut 6 – 3" x WOF strips Cut 1 – 1 ½" x WOF strip; sub-cut 8 – 1 ½" x 1 ½" squares From remaining fabric, Cut 3 – 5 ½" x LOF strips
Fabric C: 81205-990 		1 1/8 yds	Cut 12 – 3" x WOF strips
Fabric D: 81205-10 		1 7/8 yds	Cut 6 – 5 ½" x WOF strips Cut 19 – 1 ½" x WOF strips; From 13 of the strips, sub-cut 49 – 1 ½" x 10 ½" strips Cut 6 – 1 ½" x WOF strips
Crosswise Backing 81203-990 		4 yds	Cut in half along the length of fabric to get 2 – 72" x WOF pieces. Sew the pieces together along the selvage edges to get a backing piece approximately 72" x 85"

### **Block Assembly:**

1. With right sides together, sew a 3" Fabric C strip to each side of a 5 ½" Fabric A strip to make Strip Set 1, as shown. From this strip, cut 14 – 3" x 10 ½" Unit 1's.



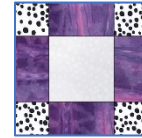
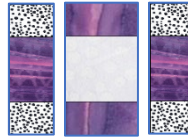
2. Repeat with the remaining 2 – 5 ½" Fabric A strips to yield a total of 30 Unit 1's.

- With right sides together, sew a 3" Fabric A strip to each side of a 5 1/2" Fabric D strip to make Strip Set 2, as shown. From this strip, cut 7 – 5 1/2" x 10 1/2" Unit 2's.



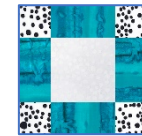
- Repeat with two more 5 1/2" Fabric D strips to yield a total of 15 Unit 2's.

- Arrange a Unit 1 on each side of a Unit 2, as shown, and sew units together to make Block 1.



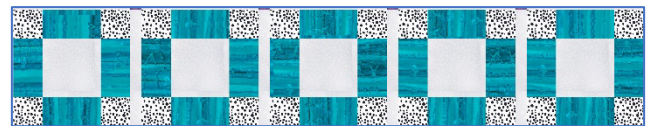
- Repeat Step 5 to yield a total of 15 Block 1's.

- Using Fabric B in place of Fabric A, repeat Steps 1 – 6 to make 15 Block 2's.



### **Quilt Top Assembly:**

- Arrange rows of five blocks in each color, alternating the colors for each row, and placing a 1 1/2" x 10 1/2" sashing strip between each block. With right sides together, sew blocks and sashing strips together to make three rows in each color, as shown.



- Arrange five Fabric D 1 1/2" x 10 1/2" sashing strips, placing a Fabric A 1 1/2" x 1 1/2" cornerstone between each strip. With right sides together, sew strips and cornerstones together to make one horizontal sashing strip, as shown.



- Repeat to make three sashing strips with Fabric A cornerstones and two sashing strips with Fabric B cornerstones.

- Arrange rows with a sashing strip between each and alternating the colors of each row. With right sides together, sew rows and sashing strips together.

- Join the remaining Fabric D 1 1/2" x WOF strips together end-to-end. From this long strip, cut two 1 1/2" x 65 1/2" strips and sew to the sides of the quilt top. Cut two 1 1/2" x 56 1/2" strips and sew to the top & bottom of the quilt top.

- Join the Fabric A binding strips using diagonal seams. Fold in half, wrong sides together, along the length of the strip and press.

- Layer quilt top with batting and prepared backing. Quilt as desired. Bind using your favorite method.